



# User Guide

## Jungle Disk Workgroup Edition

# Table of Contents

<b>1</b>	<b>Welcome</b>	<b>1</b>
	Further Assistance	2
<b>2</b>	<b>Installation</b>	<b>3</b>
	Windows Download	4
	Mac Download	5
	Linux Download	6
	Initial Setup and Configuration	7
<b>3</b>	<b>Configuration</b>	<b>8</b>
	Application Settings	9
	Network Settings	10
	Bandwidth Limiting	11
	Buckets	12
	Bucket Settings	13
	Jungle Disk Plus	14
	Network Drive	15
	Previous Versions	16
	Automatic Backups	17
	Backup Jobs	18
	Schedule	19
	What to Backup	20
	Backup Options	22
<b>4</b>	<b>Using Jungle Disk Workgroup Edition</b>	<b>23</b>
	Jungle Disk Activity Monitor	24
	Initiating Manual Backups	25
	Backup Preview	26
	Cancelling Backups in Progress	27
	Disabling Backups	28
	Restoring Backups	29
	Cached Data	31
	Logs	32
	Consistency Checks	33
	Debug Log	34
	Errors and Warnings	35
	Connecting-Disconnecting Buckets	36
<b>5</b>	<b>Tutorials</b>	<b>37</b>
	Getting Started Videos	38

## User Guide : Jungle Disk Workgroup Edition



The Jungle Disk Workgroup Edition provides you with unlimited online storage space via the Amazon S3 service.

You can use this storage space for backups, archiving data, sharing files between machines, or anything else you can think of.

There are two primary ways of using the Jungle Disk Workgroup Edition – you can choose to use one or both of these options.

- The first option is to access your online storage as network drive (mapped drive on Windows or volume on Mac/Linux). When connected as a mapped drive your Jungle Disk shows up on your desktop just like a local drive. You can copy files to it in Explorer or Finder with drag & drop, edit files directly on the mapped drive, and copy files back to your machine just as easily. When used as a mapped drive you can easily move, rename, and delete files just like you were working with them on your local computer; however any change you make is actually occurring on the remote Amazon S3 storage.
- The second option for using Jungle Disk is the automatic backup feature. The Automatic Backup feature allows you to keep files and folders on your local machine backed up automatically off-site to your Jungle Disk. If you mainly want to use your online storage space for backup, the Automatic Backup feature makes it easy and eliminates the need to copy files to your mapped drive manually on a regular basis or use 3rd party backup software. Once backed up with Automatic Backup, your files will also be available via the mapped drive.

You can easily open or copy backed up files from your mapped drive back to your local machine. If you need to restore a large number of files to your machine you can also use the built-in Restore feature that allows you to select a large number of files and directories and restore them in a single operation. The restore feature also allows you to restore previous versions of files, which are stored in a special directory on your Jungle Disk.

### User Manual Sections

---



[Installation](#)



[Configuration](#)



[Using Jungle Disk Desktop](#)



[Tutorials](#)

### Most popular sections

---

- [Welcome](#)
- [Getting Started Videos](#)
- [Initial Setup and Configuration](#)
- [Bucket Settings](#)
- [Using Jungle Disk Workgroup Edition](#)
- [Application Settings](#)
- [Jungle Disk Plus](#)
- [Jungle Disk Activity Monitor](#)
- [Configuration](#)
- [Buckets](#)

## Further Assistance



Having trouble finding a solution or answer?

If you're unable to find what you're looking for in the user guide, please visit the [customer support](#) area of the Jungle Disk website for other support options.



## Installation

Page Information

Last Updated: 5/8/2008 3:30:20 PM

---

Home > Installation

### Installation Topics

[Windows Download](#)

[Mac Download](#)

[Linux Download](#)

[Initial Setup and Configuration](#)



## Windows Download

### Page Information

Last Updated: 7/1/2008 3:40:55 PM

Home > Installation > Windows Download

### Download

- [Download](#) the Jungle Disk Workgroup Edition installer to your hard drive and run it.
- After installation completes, the application will start and display the configuration screen.
- Proceed through the [Initial Setup and Configuration](#).



Home > Installation > Mac Download

### Installation

- [Download](#) the Jungle Disk Workgroup Edition DMG file. Your web browser should automatically open the drive image and place the application on your desktop or in your Downloads folder. Drag the JungleDiskMonitor.app file from your Downloads folder to your Applications folder.
- Double-click JungleDiskMonitor.app to start it. A configuration screen will appear the first time.
- Proceed through the [Initial Setup and Configuration](#).



---

Home > Installation > Linux Download

## Installation

- [Download](#) the Jungle Disk Workgroup Edition installation TAR file and extract the TAR file to a local directory.
- Run the junglediskmonitor executable. A configuration screen will appear the first time.
- Proceed through the [Initial Setup and Configuration](#).
- Once you have configured Jungle Disk, it will continue running in the taskbar. If you restart your computer, you will need to restart Jungle Disk Monitor in order to access your Jungle Disk.
- To connect to your Jungle Disk in KDE, just open a Konquerer window and type "webdav://localhost:2667/". In GNOME select "Connect to Server" under the "Places" menu. Set the Service type to "WebDAV (HTTP)". Enter "localhost" for the server and "2667" for the port.
- You can also mount your Jungle Disk as a standard file system using DAVfs. Download, compile, and install DAVfs, then mount your Jungle Disk by running: `mount.davfs http://localhost:2667 /mnt/MOUNTPOINT -o nolocks`
- Note: To allow mounting as a non-root user, you will need to add the mount point to your /etc/fstab file.
- A command-line-only version of the application is also included, see the INSTALL file included with the download for more information.
- Jungle Disk attempts to locate your web browser automatically when clicking links in the software. If it does not find your preferred web browser, simply create a symlink to your browser named `~/jungledisk/browser`



## Initial Setup and Configuration

Page Information

Last Updated: 7/3/2008 3:53:18 PM

Home > Installation > Initial Setup and Configuration

When first launching the Jungle Disk Workgroup Edition you will be presented with an initial configuration wizard that will guide you through the process of configuring the application.

The Jungle Disk Workgroup Edition has many advanced features and options available and the most important ones are part of the initial setup process. After completing the initial setup you will be able to see all of the additional options and change your settings at any time within the configuration manager.

### 1. Internet Connection Check

The setup process begins with a check of your internet connection. Please note that an active internet connection is required.

### 2. Jungle Disk Workgroup Account Information

Enter the applicable DOMAIN and the username and password provided to you by your account manager.

### 3. Jungle Disk Configuration

On the Jungle Disk Configuration page, you will need to choose how you plan on using Jungle Disk. Regardless of which option you choose, you can always go back and change it later if you want.

- **Automatic Backup:** When configured for Automatic Backup, you can select files and folders that you want backed up to your online storage space and how often they are backed up. When a backup runs, only new or changed files are uploaded. The easy to use restore feature allows you to restore files to your computer whenever you like.
- **Network Drive:** When configured as a Network Drive, your online storage space appears as a network drive on your computer. You can copy files to the drive via drag & drop or use the drive as part of a 3rd party backup program.

### 4. Bucket Setup/Selection

Your online storage space is divided into multiple independent spaces called buckets, which are similar to having multiple virtual drives. The Jungle Disk Workgroup Edition will allow you to select the initial bucket that you will connect to. You will have the option to connect or disconnect from all buckets assigned to you by the account manager.

### 5. Automatic Backup Schedule (Only if Automatic Backup Selected in Step 4)

If you selected to use the Jungle Disk Workgroup Edition for automatic backup, you will now create an initial backup job. The first option is to identify when your backup will occur, followed by selecting the files and folders that you want to backup. Automatic backups can be customized to run automatically at any time you wish. You also have the option of running any backup job manually from the Jungle Disk Monitor.

- **Automatically backup my files every:** This option allows you to choose the frequency in which your backup will run. You have the option to run the backup manually, or at intervals of every 5 minutes, every 15 minutes, hourly, every 6 hours, daily, or weekly.
- **When a scheduled backup time is missed:** If your backup time should have happened to be missed (i.e. computer is off, internet connection is lost), your backup can either wait until the next scheduled interval is reached. It can also be configured to run as soon as possible once the condition that prevented it from occurring is no longer present.
- **Selecting files and folders for backup:** Using the selection window to the left, you can easily choose the desired files and folders that will be included or excluded from your backup.

When a folder is first selected, it will assume that all of the files within it as well as all of the files and folders beneath it will be included for backup. This status also indicates that as new files and folders are added, those new items will also become part of the backup. A bold box denotes a folder directly selected whereas a thin box indicates that it was included due to a parent folder being selected for backup.

If a folder has some portion of files or folders beneath it that are selected for backup and does not have any specific items selected or excluded, the folders above those items are flagged with a grey check. New files and folders that are added beneath a folder flagged with a grey check will only be included in future backups if they are under or within a folder with a black check.

Folders that have items specifically selected or excluded (filters applied) for backup beneath it will be flagged with a check in a gray background. New files and folders that are added beneath a folder flagged with a gray background will only be included in future backups if they are under or within a folder with a black check.

Folders that are to be excluded completely from a backup are flagged with a red X. Once a folder is marked for exclusion, you will not be able to select files or folders beneath it until you remove it from its exclusion status.

For a more detailed description of how to configure your backup please read [What to Backup](#).



## Configuration

Page Information

Last Updated: 7/3/2008 3:53:46 PM

Home > Configuration

### Configuring the Jungle Disk Workgroup Edition

The configuration console allows you to easily configure the Jungle Disk Workgroup Edition features and functions in an intuitive interface. Each area is collapsible to allow you to only display the section that you are configuring. To expand and collapse each section, simply double click the section label on the left navigation bar.

#### Configuration Topics

[Application Settings](#)

[Buckets](#)

[Automatic Backups](#)



## Application Settings

Page Information


Last Updated: 5/8/2008 3:32:23 PM

Home > Configuration > Application Settings

The application settings section of the Jungle Disk Workgroup Edition apply to the entire application, across all buckets and backup jobs.

- Keep Activity Log: Sets the length of time the activity log is kept (Disabled, 7 days, 30 days, 1 year, forever).
- Cache Directory: Selects the path where recently accessed files can be stored for faster file access.

Sets the length of time the activity log is kept (Disabled, 7 days, 30 days, 1 year, forever).



### Application Settings

These settings apply application wide, across all buckets and backup jobs.

Keep activity log:

Cache Directory:

Copies of recently accessed files are stored in this directory so that they don't need to be downloaded again. You can change the location to a different drive with more space if desired.



## Network Settings

Page Information

Last Updated: 5/8/2008 3:33:29 PM

Home > Configuration > Application Settings > Network Settings

The network settings options control all network connections made by the Jungle Disk Workgroup Edition software. The application makes only outgoing TCP connections to ports 80 and 443.

- **Connect to Amazon S3 over SSL (encrypts all network traffic):** Enabling this option will protect and encrypt your data while it is in transit between your computer and the Amazon servers. This does not apply to the actual encryption of the file once it reaches its final destination.
- **Optimize performance for high bandwidth connections:** This option, which enables large TCP window sizes, MAY increase performance if you have > 2 Mbps upstream bandwidth. You should NOT enable it on slower connections as it may reduce performance.
- **Proxy Server Configuration Options**
  - **Connect via an HTTP proxy server:** When this option is enabled, your data will be routed via your selected proxy server.
  - **Verify:** Clicking the Verify button will allow you to test your proxy server configuration.

**Proxy Server Configuration**

Connect via an HTTP proxy server

Proxy Server:  (required)

Proxy Username:

Proxy Password:



## Bandwidth Limiting

Page Information

Last Updated: 7/3/2008 3:54:17 PM

Home > Configuration > Application Settings > Bandwidth Limiting

The Jungle Disk Workgroup Edition can limit how much of your Internet bandwidth it uses to ensure that bandwidth is available for other applications like web browsing, VOIP and games. You can change these settings without interrupting transfers in progress.

- Upload Bandwidth

- Limit upload bandwidth to: Limits your upload bandwidth to XX kbps (10 kbps is the minimum setting)
- Enforce this limit: You have the option to enforce bandwidth limitation at all times or only during your selected times.

- Download Bandwidth

- Limit upload bandwidth to: Limits your download bandwidth to XX kbps (10 kbps is the minimum setting)
- Enforce this limit: You have the option to enforce bandwidth limitation at all times or only during your selected times.

The screenshot shows a configuration window with two sections: 'Upload Bandwidth' and 'Download Bandwidth'. Each section has a checkbox to 'Limit [upload/download] bandwidth to:' followed by a text input field containing '200' and a 'kbps' label. Below each checkbox are two radio button options: 'Enforce this limit all the time' (which is selected) and 'Enforce this limit between the hours of:'. The second option includes two time selection dropdown menus, both currently set to '12 AM', separated by the word 'and'. A blue arrow icon (upward for upload, downward for download) is positioned to the left of the radio buttons.



## Buckets

Page Information

Last Updated: 6/5/2008 5:04:22 PM

[Home](#) > [Configuration](#) > [Buckets](#)

The section displays the a bucket's specific details such as the bucket name and bucket type. It also allows you to remove or delete the bucket if you do not require its use any longer.

If you decide that you do not need access to the selected bucket, you can remove it from the configuration by clicking the Disconnect Bucket button. This does not delete the bucket or data within it, it simply 'disconnects' the bucket from Jungle Disk application.

If you would like to connect a bucket for use, add it by clicking the Connect Bucket button.



## Bucket Settings


Page Information

Last Updated: 7/10/2008 11:18:05 AM

Home > Configuration > Buckets > Bucket Settings

Bucket settings are applicable only to the selected bucket (default when not using Advanced Options)

- **Retry failed uploads:** If a network or file systems error occurs while uploading, the Jungle Disk Workgroup Edition will attempt to upload the file again automatically. You can configure the number of retries here. If the retry count is exceeded, the application will move on to the next file to be uploaded.
- **Local Cache Validation:** Recently accessed files and directories are stored locally to minimize network traffic. If you use the same bucket from multiple computers, the Jungle Disk Workgroup Edition needs to check with the remote server occasionally to see if changes have been made by the other computers.



### Bucket Settings

These settings apply only to this specific bucket, for both the Network Drive and Automatic Backup.

Retry failed uploads:  times

If a network or file system error occurs while uploading, Jungle Disk will retry automatically. You can configure the number of retries here. If the retry count is exceeded Jungle Disk will move on to the next file to be uploaded.

**Local Cache Validation**

Jungle Disk stores recently accessed files and directories locally to minimize network traffic. If you use the same bucket from multiple computers, Jungle Disk needs to check with the remote server occasionally to see if changes have been made by the other computers.

I only use this bucket only on this computer

I use this bucket on multiple computers

Check for changes every:  minutes



## Jungle Disk Plus

### Page Information

Last Updated: 7/10/2008 11:21:44 AM

[Home](#) > [Configuration](#) > [Buckets](#) > [Jungle Disk Plus](#)

- **Enable upload resume for large files:** When enabled, Jungle Disk will be able to continue uploading large files when disconnected or shut down without starting from the beginning again.
- **Only upload changed portions of large files:** When enabled, Jungle Disk will use the Jungle Disk Plus servers to upload only the changed portions of large files when replacing or updating existing files. This reduces the amount of data that needs to be uploaded and allows for faster uploads.
- **Fall back to complete upload if Jungle Disk Plus servers are unavailable:** When enabled, if an upload resume or block level update fails, Jungle Disk will fall back to uploading the entire file directly to Amazon S3. For large files this may require additional time and expense.



## Network Drive

Page Information

Last Updated: 5/8/2008 3:36:14 PM

---

[Home](#) > [Configuration](#) > [Buckets](#) > [Network Drive](#)

The Jungle Disk Workgroup Edition can make your online storage appear as a local network drive. This allows you to easily copy files back and forth via drag and drop, and open files directly from your online storage.

- **Network Drive Letter:** You have the option to assign a network drive letter to your Jungle Disk network drive. To stop using the network drive functionality, change the Network Drive Letter to (disabled).
- **Maximum Cache Size:** In an effort to minimize network traffic and improve performance, the Jungle Disk Workgroup Edition stores recently accessed files and directories locally. This option allows you to choose how much space is allocated for this functionality.
- **Upload Files in the Background for Faster Performance:** When enabled, the Jungle Disk Workgroup Edition will quickly copy any new files into the local cache, then upload them in the background. This will permit your network drive to become faster and easier to use and also allows the software to automatically retry any failed uploads.



## Previous Versions

Page Information

Last Updated: 5/8/2008 3:36:55 PM

[Home](#) > [Configuration](#) > [Buckets](#) > [Previous Versions](#)

The Jungle Disk Workgroup Edition can be configured to keep an archive of previous versions of files that are changed or deleted. By default this previous version archive is only kept for Automatic Backup files, however you can also enable it for your mapped drive as well. Enabling previous versions will use more space on your drive, and will also slow backups and uploads slightly as a copy is made of the previous version prior to uploading the new version.

Previous versions are kept in a special directory on your Jungle Disk. To restore a previous version you can use the built-in restore feature. Previous versions can be restored to your local drive or to their original Jungle Disk location.

You can configure the Jungle Disk Workgroup Edition to delete previous versions after a period of time. The length of time is calculated from the time the file was updated or deleted, so if you have Jungle Disk configured to remove previous versions after 60 days, all files that were updated or deleted more than 60 days ago will be purged from the previous version archive and can no longer be recovered.

- **Keep copies of changed files:** When enabled, Jungle Disk will keep copies of the previous versions of files when you modify the file or upload a new file with the same name.
- **Keep copies of deleted files:** When enabled, Jungle Disk will keep a copy of files that are deleted either manually or during backup cleanup.
- **Keep previous versions for:** When "Automatic Backup files only" is selected (the default setting) previous versions of changed and deleted files will only be kept for files backed up using the Automatic Backup feature. Files that are manually uploaded or deleted via the mapped drive will not have previous versions kept. When "All Files" is selected previous versions will be kept for both automatic backup files and any files uploaded directly via the mapped drive.
- **Don't keep previous versions for files over:** When enabled, files larger than the specified size will not be archived when modified or deleted.
- **Don't keep certain types of files:** When enabled, files with the selected types will not be archived when modified or deleted.
- **Don't keep files in certain folders:** When enabled, files under the selected folders will not be archived when modified or deleted.
- **Remove previous versions after:** When enabled, previous versions will be deleted once they are older than the specified number of days. For example, if the setting is 30 days, a file that is deleted on April 1 will be kept in the version archive until at least May 1, after which it may be purged. Previous versions are cleaned up once a week automatically. When this setting is disabled, previous versions are never deleted and will continue to take up space. You can manually remove previous versions by deleting the files from your "~\VersionArchive" folder.
- **Keep at least:** When enabled, allows you to select a minimum number of versions to keep regardless of the file's age.
- **Keep at most:** When enabled, allows you to select a maximum number of versions to keep regardless of the file's age.



## Automatic Backups

Page Information

Last Updated: 5/8/2008 3:37:23 PM


Home > Configuration > Automatic Backups

The Automatic Backup feature allows you to keep files and folders on your local machine backed up automatically off-site to your Jungle Disk. If you mainly want to use your online storage space for backup, the Automatic Backup feature makes it easy and eliminates the need to copy files to your mapped drive manually on a regular basis.

Once backed up with Automatic Backup, your files will also be accessible via the mapped drive and you can always easily open or copy backed up files from your mapped drive back to your local machine.

To create a new backup job, start by choosing a name for your backup in the Job Name field.

You also have the option to import previously exported backup job configurations. A new backup job will be created with the imported settings.



### Automatic Backup

Jungle Disk can backup your important files automatically. Automatic Backup is configured using backup jobs. Each backup job has a schedule and a set of files to backup at that time.

**Create a new Backup Job**

Usually you will only need a single backup job, but you can create additional backup jobs if needed.

Job Name:

**Import a Backup Job**

If you have previously exported a backup job configuration to a file you can import it again here. A new backup job will be created with the imported settings.

After performing one of the two options above, your new backup job will be added under the Automatic Backup section of your bucket where you can further customize the job's specific settings.



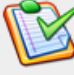
## Backup Jobs

Page Information

Last Updated: 5/8/2008 3:37:46 PM

Home > Configuration > Automatic Backups > Backup Jobs

Each backup job has a schedule and a specific set of files and folders to backup. If you would like to temporarily disable a specific backup job, you can do so by deselecting the Run this backup job at the scheduled time option.




### Backup Job

Each backup job has a schedule and a set of files to backup at that time. You can temporarily disable this backup job using the option below, or remove it entirely.


Run this backup job at the scheduled time

#### Remove Backup Job

 You can remove backup jobs that are no longer needed. Note that this will not remove the backed up files from online storage, it will only prevent any new files or changes from being backed up in the future.

[Remove this backup job](#)

#### Export Backup Job Configuration

 To move this backup job to a different machine you can export it to a local file, then import it under the Automatic Backup settings on the new machine.

[Export to file...](#)

If you no longer require the backup job, you can delete it by clicking the Remove this backup job button.

To archive your backup job configuration, you can export the configuration to a file that can be imported at a later time or on another computer. Clicking the Export to file... button will initiate this process.



## Schedule

Page Information

Last Updated: 5/8/2008 3:38:07 PM

Home > Configuration > Automatic Backups > Schedule

Automatic backups can be customized to run automatically at any time you wish. You also have the option of running any backup job manually from the Jungle Disk Monitor.

- **Automatically backup my files every:** This option allows you to choose the frequency in which your backup will run. You have the option to run the backup manually, or at intervals of every 5 minutes, every 15 minutes, hourly, every 6 hours, daily, or weekly.

Selecting the Day or Week options will allow you to select the specific time of day for your backups to run.

Automatically backup my files every:

at

- **Stop the backup if it runs longer than:** To prevent backups from running for extended periods of time, when enabled, this option allows you to set a maximum run time for your backups.
- **When a scheduled backup time is missed:** If your backup time should have occurred but was missed (i.e. computer is off, internet connection is lost), you backup can either wait until the next scheduled interval is reached. It can also be configured to run as soon as possible once the condition that prevented it from occurring is no longer present.
- **Wake my computer from sleep for scheduled backups:** If your computer is in a sleep mode, this option will allow the software to wake the computer from sleep mode in order to conduct the scheduled backup.

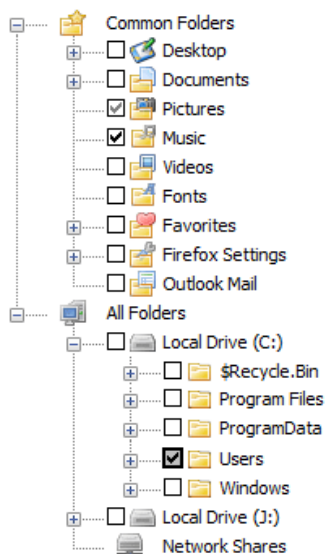


## What to Backup

Page Information

Last Updated: 7/24/2008 4:01:48 PM

Home > Configuration > Automatic Backups > What to Backup



### Basic Folder and File Selection

The folder selection menu is divided into two sections to allow you to quickly and easily choose or exclude the folders for your backup jobs.

The Common Folders section contains the most common folders that are typically selected for backup.

For a greater level of control, you can select the specific files and folders under the All Folders section.

When a folder is selected, you will have the following options:

- Do not backup this folder
- Backup all the files in this folder
- Backup only certain types of files
- Backup all files, except certain types
- Backup on the files I select in this folder
- Backup files in sub-folders

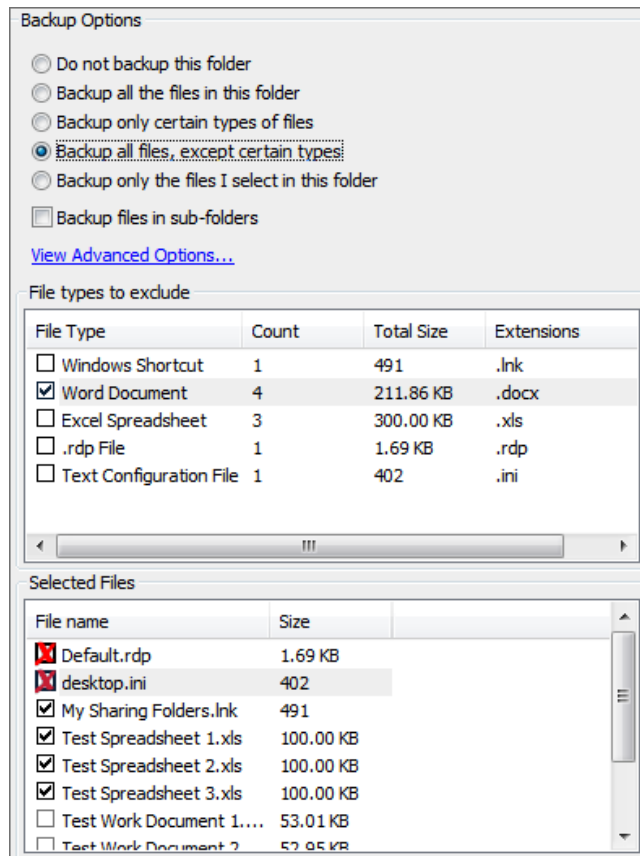
The state of your selected folders and the files beneath them are indicated by the status of the selection box to the left.

Please refer to the Folder Status Indications table to understand what each status represents.

### Folder Status Indicators

- When a folder is first selected, it will assume that all of the files within it as well as all of the files and folders beneath it will be included for backup. This status also indicates that as new files and folders are added, those new items will also become part of the backup. A bold box denotes a folder directly selected whereas a thin box indicates that it was included due to a parent folder being selected for backup.
- If a folder has files or folders that are selected beneath it that do not have any filtering enabled (i.e. specific items selected or excluded), it is flagged with a gray check. New files and folders that are added beneath a folder flagged with a gray check will only be included in future backups if they are under or within a folder with a black check.
- Folders that have items specifically selected or excluded (filters applied) for backup beneath it will be flagged with a check in a grey background. New files and folders that are added beneath a folder flagged with a grey background will only be included in future backups if they are under or within a folder with a black check.
- Folders that are to be excluded completely from a backup are flagged with a red X. Once a folder is marked for exclusion, you will not be able to select files or folders beneath it until you remove it from its exclusion status.

Specific options for your folders can be selected using the option panel to the right of the folder tree. This allows you to customize files for inclusion, exclusion, etc.:





## Backup Options

Page Information

Last Updated: 7/3/2008 3:55:43 PM

[Home](#) > [Configuration](#) > [Automatic Backups](#) > [Backup Options](#)

To give you the most control over your automatic backups, these additional options will allow you to customize your specific backup job.

- Remove locally deleted files from my remote backup: With this option enabled, files that are deleted from your computer are also deleted from the Amazon servers, however, the file will still be maintained in the Previous Versions archive.
- Backup in-use files (NTFS formatted drives only): For NTFS drives, the Jungle Disk Workgroup Edition has the ability to backup files that are currently in use by the computer. For Mac and Linux, locked files are already able to be backed up.
- Ignore timezone shifts when detecting changed files: For FAT file systems, this feature will assume files modified within even hour increments from the previous version are due to time zone shifts. If you enable this option, there is a small potential that a file update may be overlooked if you happen to update a file on increments of exactly one hour from the recent version. If you do not have a FAT file system, this option should not be selected.
- Previous Versions
  - Use the bucket previous version settings for this backup job: All settings as configured in the Previous Versions section will apply to this specific backup.
  - Customize the previous version settings for this backup job:
    - Keep previous versions of changed files: Copies of the previous versions of files are maintained when you modify the file or upload a new file with the same name.
    - Keep previous versions of deleted files: Copies of files that are deleted either manually or during backup cleanup are still maintained.
    - Don't keep previous versions for files over: Files larger than the specified size will not be archived when modified or deleted.
    - Keep at most: Allows you to select a maximum number of versions to keep regardless of the file's age.



## Using Jungle Disk Workgroup Edition

Page Information

Last Updated: 5/8/2008 3:25:33 PM

---

Home > Using Jungle Disk Workgroup Edition

### Using Jungle Disk Workgroup Edition Topics

[Jungle Disk Activity Monitor](#)

[Initiating Manual Backups](#)

[Backup Preview](#)

[Cancelling Backups in Progress](#)

[Disabling Backups](#)

[Restoring Backups](#)

[Cached Data](#)

[Logs](#)

[Consistency Checks](#)

[Debug Log](#)

[Errors and Warnings](#)

[Connecting-Disconnecting Buckets](#)



## Jungle Disk Activity Monitor

Page Information

Last Updated: 7/3/2008 3:55:56 PM

[Home](#) > [Using Jungle Disk Workgroup Edition](#) > [Jungle Disk Activity Monitor](#)

The Jungle Disk Activity Monitor serves several functions to support the overall functionality of the Jungle Disk Workgroup Edition .

The activity monitor will allow you to:

- Manually start a backup job
- Preview a backup job
- Display any errors or warnings that are generated
- Cancel an active backup job
- Initiate a file/folder restoration
- Conduct a backup cleanup operation
- Expire or remove cached files/folders
- View your network drive activity log
- View your backup history log
- Launch the Jungle Disk Workgroup Edition configuration
- View your account activity report
- View the debug log
- View the time/date of your last backup
- View the time/date of your next scheduled backup



## Initiating Manual Backups

Page Information

Last Updated: 5/8/2008 3:26:02 PM

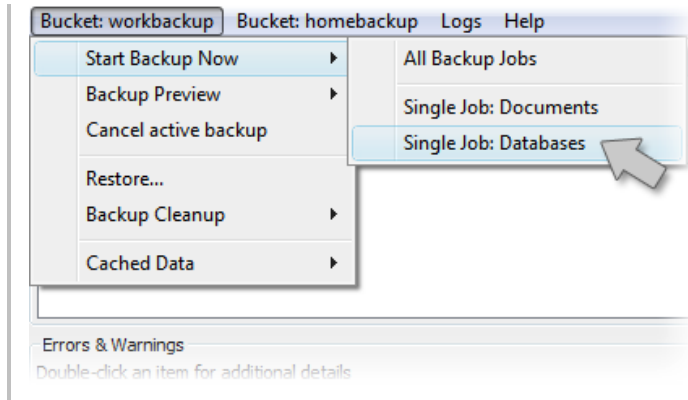
Home > Using Jungle Disk Workgroup Edition > Initiating Manual Backups

For any existing backup job, you can always manually initiate the job by selecting the applicable job under the selected bucket, or start all backup jobs for under a selected bucket.

### 1. Initiate Backup Via Bucket Options Dropdown:

To manually start a backup for a selected bucket, select the bucket name from the top menu, then select Start Backup Now.

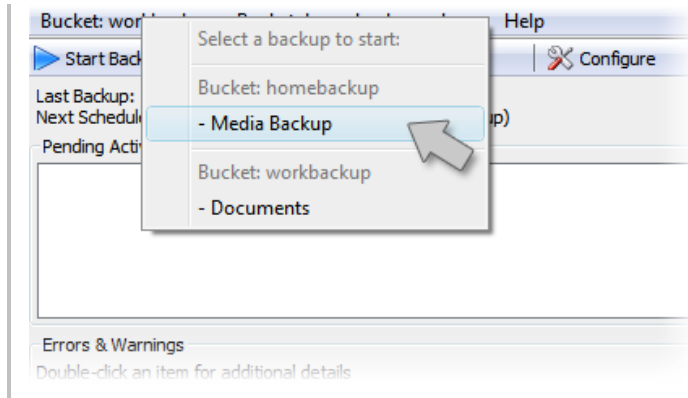
You have the option to initiate All Backup Jobs or select an individual backup job from the list.



### 2. Initiate Backup Via START BACKUP button:

Another method to initiate a backup manually is to use the Start Backup button.

Clicking this button will list all individual backup jobs for a bucket. Please note that using this method will only allow you to initiate a single backup job for one bucket. To manually start all backup jobs for a bucket, please use the method number 1 above.





## Backup Preview

Page Information

Last Updated: 7/3/2008 3:56:09 PM

Home > Using Jungle Disk Workgroup Edition > Backup Preview

Prior to initiating any backup job, you have the option to preview which files will be updated. The initial view shows all files and their status as either New, Updated, Unchanged or Deleted.

- **New:** Indicates that a current version of the file does not exist and will be uploaded.
- **Updated:** Indicates that the version locally is newer than the version in your backup and will be updated.
- **Unchanged:** Indicates that the local version matches the version in your backup.
- **Deleted:** Indicates that your local version has been deleted and that the version in your backup will be removed. Please note: If you have selected to keep versions or archives of deleted files, these will still be maintained in your file archives.

Checking the Hide unchanged files option will hide any files listed with an Unchanged status allowing you to easily identify the actions that the backup will take.

Local Path	Status	Remote Path
C:\Users\scott\Documents\Test Spreadsheet 1.xls	Unchanged	/backups/SCOTT/PC/C/Users/scott/Docume
C:\Users\scott\Documents\Test Spreadsheet 2.xls	Unchanged	/backups/SCOTT/PC/C/Users/scott/Docume
C:\Users\scott\Documents\Test Spreadsheet 3.xls	Unchanged	/backups/SCOTT/PC/C/Users/scott/Docume
	Deleted	/backups/SCOTT/PC/C/Users/scott/Docume
C:\Users\scott\Documents\Test Work Document 1.docx	Unchanged	/backups/SCOTT/PC/C/Users/scott/Docume
C:\Users\scott\Documents\Test Work Document 2.docx	Updated	/backups/SCOTT/PC/C/Users/scott/Docume
C:\Users\scott\Documents\Test Work Document 3.docx	Unchanged	/backups/SCOTT/PC/C/Users/scott/Docume
C:\Users\scott\Documents\Test Work Document 4.docx	New	/backups/SCOTT/PC/C/Users/scott/Docume

Hide unchanged files

Start Backup Close



## Cancelling Backups in Progress

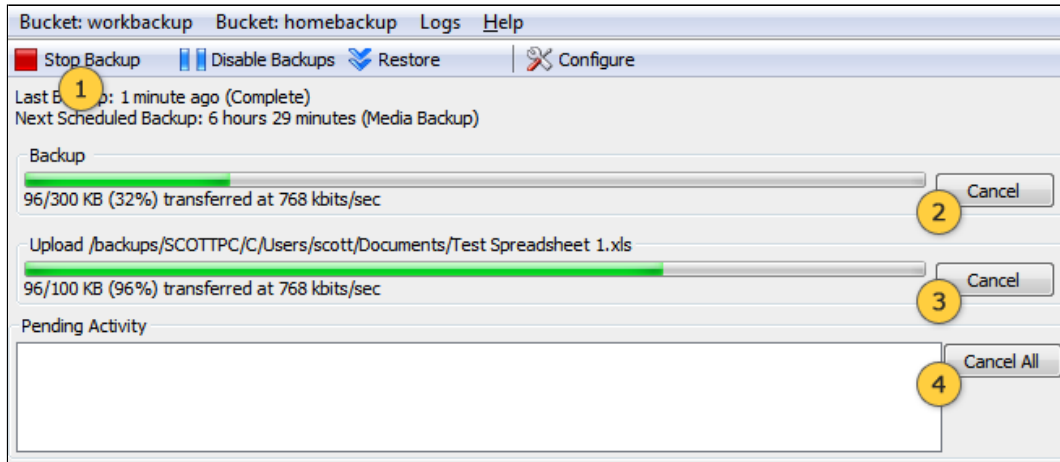
Page Information

Last Updated: 5/8/2008 3:26:59 PM

Home > Using Jungle Disk Workgroup Edition > Cancelling Backups in Progress

When a backup job is in progress, there are 4 ways to stop the job.

Clicking any one of the 4 buttons below will end the backup job in progress and the job will not run again until its next scheduled execution time.





## Disabling Backups

Page Information

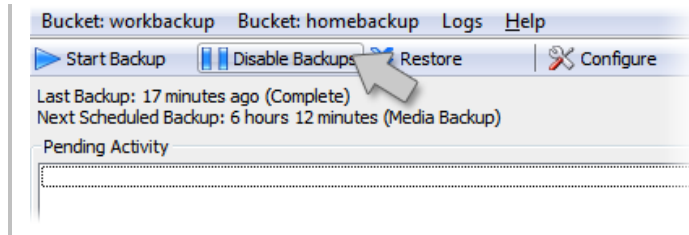
Last Updated: 5/8/2008 3:27:09 PM

Home > Using Jungle Disk Workgroup Edition > Disabling Backups

The Jungle Disk Workgroup Edition allows you to temporarily suspend all of your configured backup jobs to prevent them from running at their scheduled times.

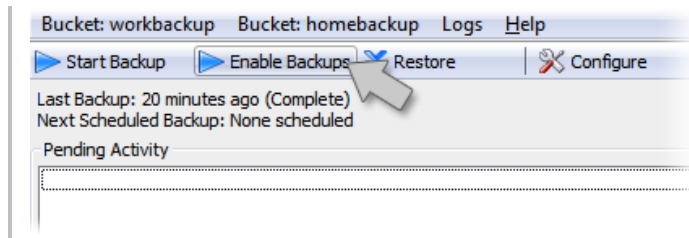
After clicking the Disable Backups button, you should see that your Next Scheduled Backup is listed as: None Scheduled

**Please note that your backups will be disabled until you manually enable backups.**



Once you are ready to have your all of your backup jobs resume as scheduled, click the Enable Backups button.

You should see the Next Scheduled Backup job change from None Scheduled to one of your configured backup jobs.





## Restoring Backups

Page Information

Last Updated: 7/3/2008 3:56:45 PM

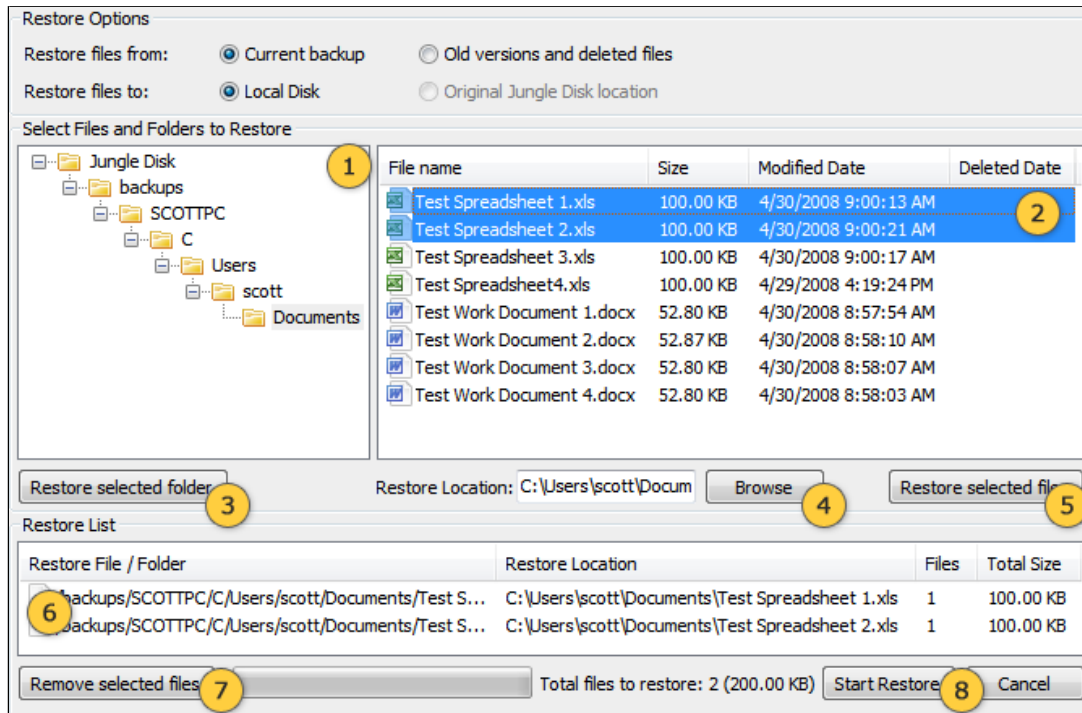
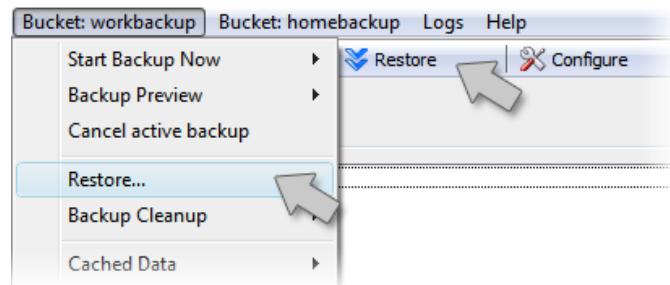
Home > Using Jungle Disk Workgroup Edition > Restoring Backups

If you should need to restore the files from a backup job, you can either manually copy those files from your network drive, or use the Restore feature in the Jungle Disk Activity Monitor.

To restore your files from a previous backup, start by clicking the Restore... option under the applicable bucket or the Restore button on the navigation bar.

This should open a new Restore Options window that will allow you to select which files to be restored, as well as where on your hard drive they will be saved.

The Jungle Disk Workgroup Edition attempts to select the original destination from where the files were originally backed up from.



1. Backup Folder Selection : All of the files and folders that are backed up will be listed in this window. If you are restoring entire folders, select the applicable folder from this area.

2. Backup File Selection: This window is used to select individual files for restoration.

3. Restore Selected Folders Button: Once you have highlighted a specific folder for restoration, clicking this button will add that folder to the Restore List (6) section. Jungle Disk will restore the files to their original location, however you can modify the Restore Location (4) by clicking the Browse button. This process can be repeated for as many specific folders as you wish.

4. Restore Location: As you select files and folders to be restored, those items will be restored to the original locations from where they were backed up. If you would like to restore them to a different location, click the Browse button to update this information.

5. Restore Selected Files Button: Once you have highlighted a specific files for restoration, clicking this button will add those files to the Restore List (6) section. Jungle Disk will restore the files to their original location, however you can modify the Restore Location (4) by clicking the Browse button. This process can be repeated for as many specific files as you wish.

6. Restore List: This window will list the various files and folders you have selected for restoration to your computer. If you would like to remove any of the items in the list, highlight the applicable item and click the Remove Selected Files button (7).

7. Remove Selected Files: If you need to remove any of the items listed in the Restore List section, highlight the applicable item and click this button.
8. Start Restore: Once you have selected all files and folders, you can initiate the restoration by clicking this button. If the restore is successful, you should see a (RESTORE COMPLETE) message next to the Last Backup status in the Jungle Disk Activity Monitor.



## Cached Data

Page Information

Last Updated: 5/8/2008 3:27:36 PM

Home > Using Jungle Disk Workgroup Edition > Cached Data

The cache directory is where files are stored during background upload and after upload for quick access should you need to open the file from the Jungle Disk drive. You may want to change the default location of the cache directory to a different drive with more space available for example, as a large cache reduces the need to re-download content from Amazon S3. If your cache fills up during a large upload, you may notice that background uploads from the operating system to the cache slow significantly (to 32kbps or less). This is normal and as space is freed in the cache from completed uploads the cache upload will return to normal speed.

The default location for Jungle Disk's cache for each platform is listed below. You can change the cache location and set a maximum size for the local cache in the Jungle Disk configuration.

- Windows: `%APPDATA%\JungleDisk\cache`  
(e.g. `C:\Documents and Settings\username\Application Data\Jungle Disk`)
- Mac: `~/Library/Caches/JungleDisk/cache`
- Linux: `./cache`

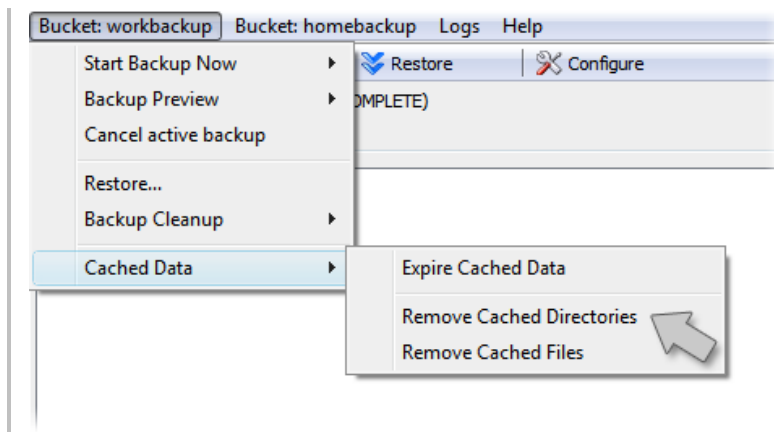
**Expire Cached Data:** This will reset the expiration timeout on any cached files and directories. The next time a file or directory is accessed Jungle Disk will re-verify that it has not been modified on the server. If you are accessing the same bucket from multiple machines at the same time, there will be a delay of 2-4 minutes before changes made on one machine appear on the other machine due to caching. You can reduce this delay by expiring cached data when you know changes have occurred that are not yet visible.

**Remove Cached Directories:** This will delete the the cached directory structure of your bucket and allow it to be rebuilt should it become out of sync. This can occur when using Jungle Disk with multiple computers. Your cached files will not be removed as part of this process.

**Remove Cached Files:** This will delete any cached files. It should not be needed in most circumstances, but can free space in your cache and remove any invalid directory listings should they occur. This only affects your cache of the data and does not remove any actual data from the S3 service. In addition, any files stored in the cache for background upload are not removed.

To manage the cached data of a selected bucket, choose the Cached Data option from the applicable bucket via the dropdown menu at on the top navigation bar of the Activity Monitor.

You will then choose expire your cached data, or remove your cached directories/files.





## Logs

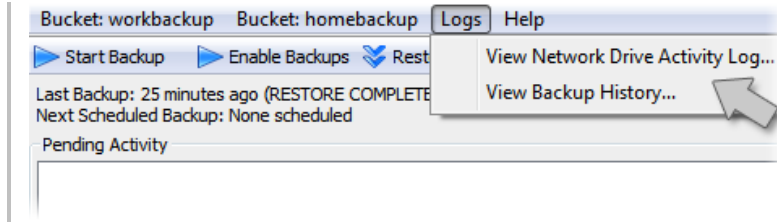
Page Information

Last Updated: 7/3/2008 3:57:04 PM

Home > Using Jungle Disk Workgroup Edition > Logs

The Backup History and Network Drive Activity Logs can be used to provide valuable information about the file and application activity.

To view these logs, click the Logs option from the top navigation bar on the Jungle Disk Activity Monitor.



Network Drive Activity Log: Shows non-backup activity (i.e. uploads/downloads directly via the mapped drive).

- The fields for the Activity Log are:
  - BackupID (corresponds to the log file)
  - Start Time
  - Duration
  - Bucket
  - Total Files
  - Total Size
  - Files Transferred
  - File Size
  - Errors
  - Status

Backup History Log: Shows the backup history for completed backup jobs (Entries for current backups not shown until completed or canceled)

- For the individual Backup Logs, the fields are:
  - Operation Type
  - Bucket
  - Path
  - Total File Size
  - Amount Transferred (usually the same unless failed)
  - Start Time (in Unix time\_t format - seconds since 1/1/1970 GMT)
  - Duration
  - Result
  - Additional Details



## Consistency Checks

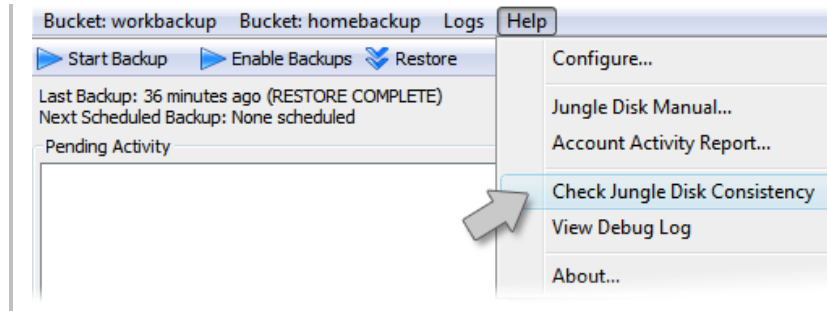
Page Information

Last Updated: 5/8/2008 4:22:47 PM

Home > Using Jungle Disk Workgroup Edition > Consistency Checks

To get a complete measurement of the storage space you are using, use the Consistency Check feature.

To check consistency, choose the option from the Help menu on the Activity Monitor top navigation bar.



After running the consistency check you will need to double click the "Consistency Check Complete" message in the Errors & Warnings section to see the full details of the check. Your storage total is located on the "Detailed Message" line and is in the following format:

8981 dirs (the number of folders/directories), 9590 attrrs (the number of files), 18304601296 bytes total size (the amount of data stored)

To approximate the data stored, divide the bytes total size by 1,000,000,000 or move the decimal place 9 space and this will give you the number of gigabytes. In the example above, this would equate to 18.304 gigabytes of data.



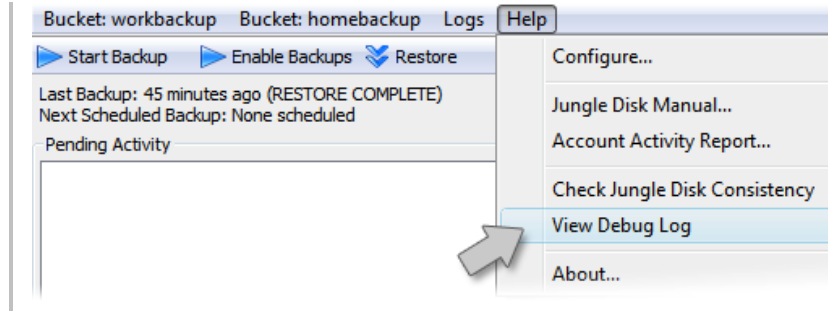
## Debug Log

Page Information

Last Updated: 7/3/2008 3:57:29 PM

Home > Using Jungle Disk Workgroup Edition > Debug Log

To facilitate the troubleshooting process, the Jungle Disk support team can often use the data located in the debug log to track down an issue. The information in the log can be captured by clicking on the View Debug Log option within the Activity Monitor.



This should open a new window that contains the text from the debug log. To capture the log so that it can be pasted into a support email or forum post, click the Copy to Clipboard button. This will temporarily store the data from the log into memory and allow you to paste the debug log wherever you need.



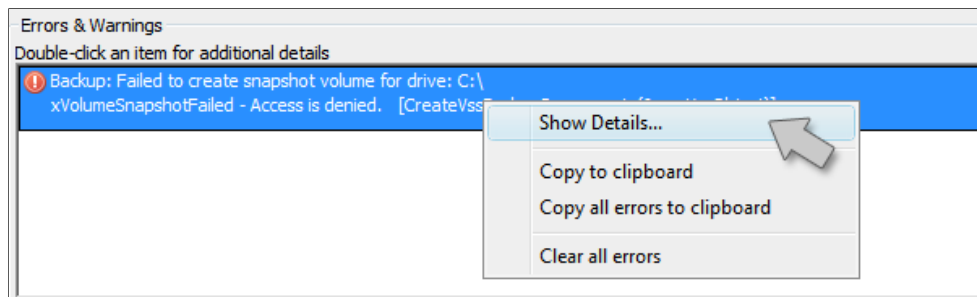
## Errors and Warnings

Page Information

Last Updated: 5/8/2008 3:28:45 PM

Home > Using Jungle Disk Workgroup Edition > Errors and Warnings

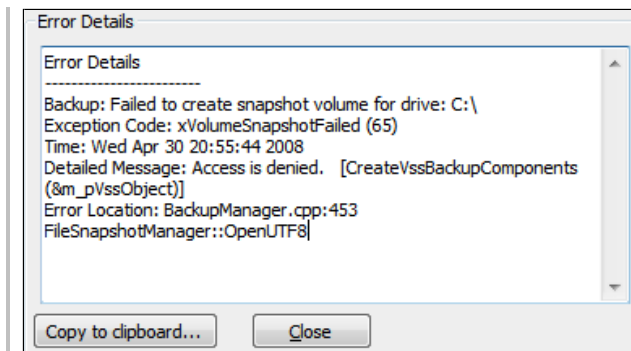
If while using the Jungle Disk Workgroup Edition you should happen to receive an error or warning in the Errors & Warnings status field, you can obtain further information about the error by clicking on the warning and selecting Show Details...



Viewing the specific error details may help you understand the nature of the error or warning you received.

However, if you need further assistance with identifying a problem, please use the Copy to clipboard... button which will place the text of the error or warning into your computer's memory.

If you contact customer support you will be able to 'paste' the text that was copied into the clipboard into your forum post or email.



## Connecting-Disconnecting Buckets

Page Information

Last Updated: 7/3/2008 3:57:52 PM

---

[Home](#) > [Using Jungle Disk Workgroup Edition](#) > [Connecting-Disconnecting Buckets](#)

All of your available buckets will be displayed in the configuration console. You have the option to CONNECT or DISCONNECT any bucket by clicking the applicable bucket from the list and clicking the Connect Bucket or Disconnect Bucket button.

The data and files that are located in these buckets are not affected by the connecting or disconnecting procedure.

The ability to read and/or write to your available buckets is controlled by the account manager.



# Tutorials

Page Information  
Last Updated: 5/8/2008 3:29:34 PM

---

[Home](#) > Tutorials

Tutorials Topics

[Getting Started Videos](#)



## Getting Started Videos

Page Information

Last Updated: 6/23/2008 11:39:29 AM

[Home](#) > [Tutorials](#) > [Getting Started Videos](#)

Getting Started Videos:

- [Jungle Disk for Windows](#)
- [Jungle Disk for Mac](#)